



## A LEVEL Philosophy, Ethics and Religion (WJEC)

**Career Paths include:** Journalism, business, education, counselling, caring profession, National Health Service, aid, armed services, civil service, police, law.

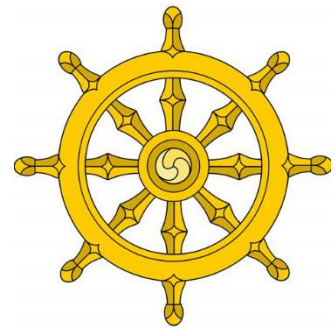
### AS Unit 1: Buddhism – 1 ¼ hour exam (15%)

**Theme 1: Religious Figures and sacred texts** – Historical Buddha, enlightenment, Buddhists texts and their use in daily life.

**Theme 2: Religious Concepts** – the nature of reality, teachings and concepts.

**Theme 3: Religious life** – key moral principles.

**Theme 4: Religious practices that shape identity** – meditation, going for refuge, the importance of giving.



### AS Unit 2: Philosophy and Ethics – 1 ¾ hour exam (25%)

#### Philosophy

**Theme 1 & 2: Arguments for the existence of God** – teleological, cosmological and ontological.

**Theme 3: The problem of evil and suffering**

**Theme 4 : Religious Experience**

#### Ethics

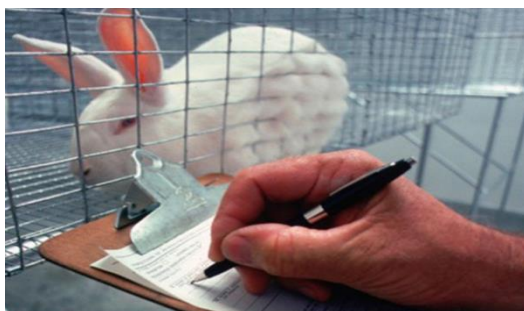
**Theme 1: Ethical thought**

**Theme 2: Natural Law**

**Theme 3: Situation Ethics**

**Theme 4: Utilitarianism**

*Ethical theories will be applied to animal experimentation for medical research, nuclear weapons, relationships, abortion and euthanasia.*



### A2 Unit 3: Buddhism – 1 ½ hour exam (20%)

**Theme 1: Religious figures and sacred texts** - E.g. Dalai Lama.

**Theme 2: Historical developments in religious thought** - Buddhism in Japan, the relationship between religion and society, challenges from science.

**Theme 3: Social developments in religious thought** - Buddhism in Britain, religion, equality and discrimination and feminist approaches in Buddhism.

**Theme 4: Religious practices that shape identity**

**A2 Unit 4: Religion and Ethics – 1 ½ hour exam (20%)**

**Theme 1: Ethical thought**

**Theme 2: Deontological ethics**

**Theme 3: Determinism**

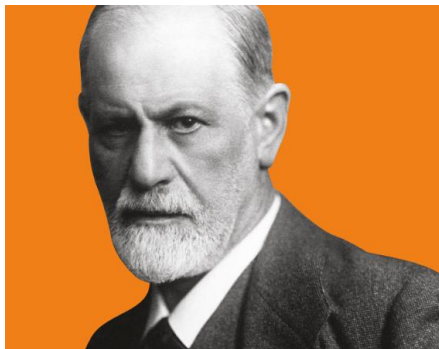
**Theme 4: Free will**

**A2 Unit 5: Religion and Philosophy – 1 ½ hour exam (20%)**

**Theme 1: Challenges to religious belief** - Freud, Darwin and atheism.

**Theme 2: Religious experience**- miracles.

**Theme 3 & 4: Religious language**



**A1 Assessment Structure: 40%**

**Unit 1 & 2:** For each paper students will have a choice of questions. Students will answer explanation and evaluation questions.

**A2 Assessment Structure: 60%**

**Unit 3, 4 & 5:** For each paper students will have a choice of questions. Students will answer explanation and evaluation questions.