

NID DYSG HEB FOES

**Ysgol Brynhyfryd**

# Ysgol Brynhyfryd

Cwricwlwm i Gymru  
Curriculum for Wales

# Gwerthoedd Ysgol Brynhyfryd/ Ysgol Brynhyfryd's Values

## Yn Ysgol Brynhyfryd rydym yn:

- ▶ Gofalu am ein Hunain ac Eraill (Lles)
- ▶ Yn Falch o'n Cymuned (Perthyn)
- ▶ Cymryd Cyfrifoldeb (Parch)
- ▶ Ysbrydoli Pawb (Cymryd Cyfleoedd)
- ▶ Credu mewn Llwyddiant i Bawb (Y Gorau y Gallwn Fod)

## At Ysgol Brynhyfryd we:

- ▶ Care for Ourselves and Each Other (Wellbeing)
- ▶ Are Proud of Our Community (Belonging)
- ▶ Take Responsibility (Respect)
- ▶ Inspire All (Take Opportunities)
- ▶ Believe in Achievement for All (The Best We Can Be)

**'Llais i Bawb a Chlust i Wrando'**  
***A Voice for All and an Ear to Listen'***

# Cyd-destun yr Ysgol

Mae Ysgol Brynhyfryd yn ysgol naturiol ddwyieithog yng nghanol Dyffryn Clwyd, ac yn gwasanaethu dalgylch ddaearyddol eang gyda disgyblion yn dod o dref Rhuthun a'r gweddill o'r ardal wledig o amgylch, gan ei gwneud yn y bôn, yn ysgol wledig gyda tua 70% o'r disgyblion yn cyrraedd yr ysgol ar fysiau.

Mae yna 1,148 o ddisgyblion ar rôl. Mae cefndir economaidd, cymunedol ac ieithyddol y disgyblion yn amrywio'n enfawr gyda tua 66% o ddisgyblion yn dod o gartrefi Saesneg eu hiaith yn bennaf a thua 34% o gartrefi Cymraeg eu hiaith.

Mae'r ysgol yn gwasanaethu Clwstwr Ysgolion Cynradd Rhuthun o 14 o ysgolion cynradd ond yn derbyn disgyblion o nifer o ysgolion eraill y tu allan i'r clwstwr.

Mae'r ysgol yn falch o'i natur a'i diwylliant Cymreig sy'n adlewyrchu'r ardal

Ysgol Brynhyfryd is a naturally bilingual school in the middle of the Clwyd Valley, and serves a wide geographical catchment area with pupils coming from the town of Ruthin and the rest from the surrounding rural area, making it essentially a rural school, with around 70% of pupils arriving at school by bus.

There are 1,148 pupils on roll. The economic, community and linguistic background of the pupils varies enormously with around 66% of pupils coming from mainly English-speaking homes and around 34% from Welsh-speaking homes.

The school serves the Ruthin Primary School Cluster of 14 primary schools but accepts pupils from many other schools outside the cluster.

The school is proud of its Welsh nature and culture which reflects the area.

# Ein gweledigaeth ar gyfer ein disgyblion yw ein bod am i'n cwricwlwm eu galluogi i ddatblygu/dod yn:

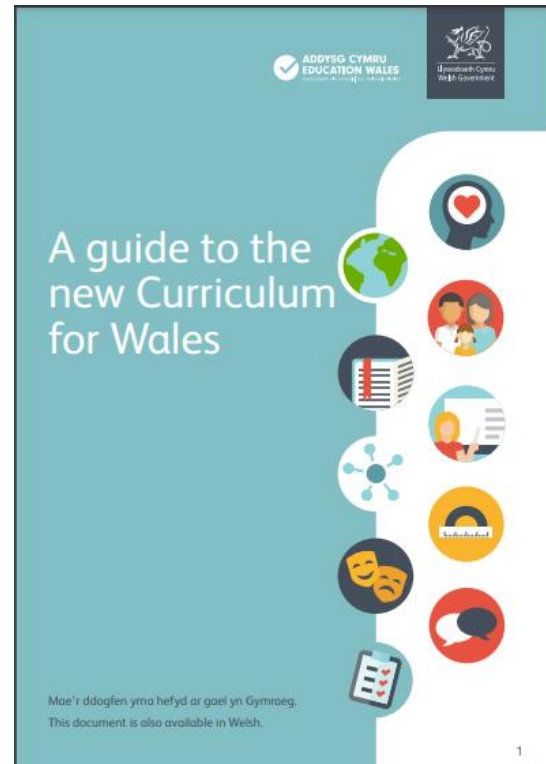
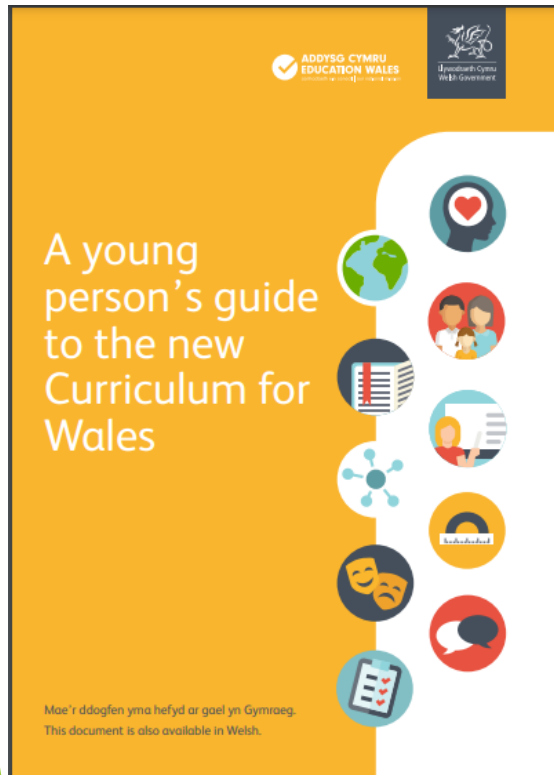
- ▶ Ddysgwyr annibynnol
- ▶ Sgiliau cadarn y gallent eu defnyddio mewn amrywiaeth o gyd-destunau- llythrennedd, rhifedd, cymhwysedd digidol
- ▶ Dinasyddion da gyda gwerthoedd cryf ac yn falch o'u cymuned, diwylliant a'u dwyieithrwydd
- ▶ Datrys wyr problem wydn
- ▶ Chwaraewyr tîm
- ▶ Perthnasu eu haddysg i'r byd go iawn
- ▶ Goddefgar a chynhwysol
- ▶ Uchelgeisiol/Awyddus, cyflawni eu gorau ac yn ffynnu
- ▶ Gorwelion eang
- ▶ Ymholgar- gofyn cwestiynau am eu cwricwlwm i ddeall y byd

# Our vision: Our vision for our pupils is that we want our curriculum to enable them to develop/become:

- ▶ Independent learners
- ▶ Sound skills which they can utilise in a variety of contexts - literacy, numeracy, digital competence
- ▶ Good citizens with strong values and proud of their community, culture and bilingualism
- ▶ Resilient problem solvers
- ▶ Team players
- ▶ Relate their education to the real world
- ▶ Tolerant and inclusive
- ▶ Ambitious/aspirational, achieving their best and thriving
- ▶ Wide horizons
- ▶ Inquisitive - asking questions about their curriculum to understand the world

# Arweiniad Llywodraeth Cymru Welsh Government guidance

► <https://youtu.be/SCMLnc8lMxE>



<https://hwb.gov.wales/api/storage/4e66c555-73aa-44ee-93e5-1e612906f1d2/220208-parents-carers.pdf>  
<https://www.llyw.cymru/mae-addysg-yn-newid>

# Dibenion y cwricwlwm *Purposes of the curriculum*

Dibenion y cwricwlwm yng Nghymru yw ceisio sicrhau bod plant a phobl ifanc yn datblygu i fod:

*The purposes of the curriculum in Wales should be that children and young people develop as:*

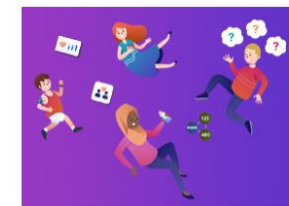


*Mae gan y cwricwlwm Newydd 6 Maes Dysgu a Phrofiad:  
The new curriculum has 6 Areas of Learning and Experience:*

- Y Celfyddydau Mynegiannol / Expressive arts
- Iechyd a Lles / Health and Well-being
- Dyniaethau / Humanities
- Ieithoedd, Llenyddiaeth a Chyfathrebu / Languages, Literacy and Communication
- Mathemateg a Rhifedd / Mathematics and Numeracy
- Gwyddoniaeth a Thechnoleg / Science and Technology



Y Celfyddydau Mynegiannol



Iechyd a Lles



Y Dyniaethau



Ieithoedd, Llythrennedd a Chyfathrebu



Mathemateg a Rhifedd



Gwyddoniaeth a Thechnoleg

*Bydd y medrau Llythrennedd, Rhifedd a Chymhwysedd Digidol yn cael eu dysgu ar draws pob maes dysgu a phrofiad yn ogystal â'r sgiliau cyfannol.*

*Language, Numeracy and Digital Competence skills will be taught across all areas of learning and experience as well as the integral skills*



# Prif Egwyddorion dylunio cwricwlwm Ysgol Brynhyfryd yw:

- ▶ Adeiladu ar waith y “Llinyn Aur”, adnabod syniadau pwerus sydd yn sail i bob pwnc a datblygu’r rhain yn fanwl er mwyn sicrhau bod disgyblion yn gwneud cynnydd wrth ddatblygu’r sgiliau o fewn pob pwnc. Yr egwyddor o “symud o ddysgu Hanes i ddod yn Hanesydd”.
- ▶ Model, Dysgu, Asesu, Adolygu ac Addasu (sydd wedi bod ar waith ers 2017)
- ▶ Yn seiliedig ar y model o feistrolaeth
- ▶ Addysgu’r ddealltwriaeth o gysyniadau a datblygu dealltwriaeth ddofn/helaeth
- ▶ Hyrwyddo datrys problemau a chyd-destunau trosglwyddadwy
- ▶ Datblygu cysondeb rhwng meysydd cwricwlwm i alluogi disgyblion i wneud cysylltiadau yn eu dysgu
- ▶ Defnyddio asesu fel arf i gynllunio’r camau nesaf mewn dysgu a hyrwyddo pob ffurf o asesu gan gynnwys ffurfiannol a chrynodol.
- ▶ Gwrando ar ddisgyblion ac addasu/anelu i ateb themâu y mae disgyblion yn chwilfrydig amdanynt. Er enghraifft, gofyn i ddisgyblion am y cwestiynau mawr sydd ganddynt a chynnwys y rhain mewn i’r Dysgu ac Addysgu
- ▶ Cyswllt clir rhwng y Pedwar Diben a’r cwricwlwm
- ▶ Ffocws clir ar wybodaeth, sgiliau a phrofiadau.

# Principles of Curriculum Design

- ▶ The Main Principles of curriculum design at Ysgol Brynhyfryd are:
- ▶ Built on the “Y Llinyn Aur” work, identifying powerful ideas that underpin each subject and develop these in depth to ensure pupils progress in developing the skills within each subject. The principle of “moving from learning History to becoming an Historian”.
- ▶ Teach, Assess, Review, Adapt model (which has been in place since 2017).
- ▶ Based on the model of mastery
- ▶ Teach the understanding of concepts and develop a deep understanding
- ▶ Promote problem solving and transferable contexts
- ▶ Develop coherence between curriculum areas to enable pupils to make connections in their learning
- ▶ Use assessment as a tool to plan next steps in learning and promotes all forms of assessment including formative and summative
- ▶ Listens to pupils and adapts/aims to answer themes pupils are curious about. For example, asking pupils about big questions they have and incorporating these into the T&L
- ▶ A clear link between the Four Purposes and the curriculum.
- ▶ A clear focus on knowledge, skills and experiences.

# Llais y Disgybl / Pupil Voice

- ▶ ‘Bydd Cwricwlwm sy’n cynnwys dysgwyr yn Gwricwlwm cyfoethog sy’n ysgogi chwilfrydedd, yn creu angerdd am ddysgu ac yn galluogi creadigrwydd ac ymrwymiad i fod yn ddysgwr gydol oes’
- ▶ Datblygu llais y disgybl i roi llais i bawb yn nheulu Ysgol Brynhyfryd, i feithrin yr ymdeimlad o berthyn a bod gan bawb yr hawl i gael eu clywed.
- ▶ Datblygu ein
  - ▶ Cyngor Myfyrwyr
  - ▶ Mewnbwn i fywyd ysgol
  - ▶ Mewnbwn i feysydd cwricwlaidd
  - ▶ Yn canolbwyntio ar eu hanghenion a'u diddordebau
- ▶ Cael adborth gan ddisgyblion trwy holiaduron cynghorau ysgol.
- ▶ **‘A Curriculum that includes learners will be a rich Curriculum that stimulates curiosity, creates a passion for learning and enables creativity and the commitment to being a lifelong learner.’**
- ▶ Developing the pupil voice to give everyone a voice in the Ysgol Brynhyfryd family, to foster the sense of belonging and that everyone has the right to be heard.
- ▶ Developing our
  - ▶ Student Council
  - ▶ Input in to school life
  - ▶ Input in to curriculum areas
  - ▶ Focussed on their needs and interests
- ▶ Gaining feedback from pupils through questionnaires school councils.

**‘Llais i Bawb a Chlust i Wrando’**  
***A Voice for All and an Ear to Listen***

# Ysgol Ddwyieithog - A Bilingual School

CA3	KS3
FFRWD IAITH GYNTAF GYMRAEG CA3 POPETH DRWY'R GYMRAEG	FIRST LANGUAGE WELSH STREAM KS3 ALL THROUGH WELSH MEDIUM
FFRWD SAESNEG \ AIL IAITH GYMRAEG CA3 POPETH DRWY'R SAESNEG	ENGLISH STREAM / WELSH SECOND LANGUAGE KS3 ALL THROUGH ENGLISH MEDIUM
CA4	KS4
Cynnig cyfartal o bynciau drwy gyfrwng y Gymraeg a'r Saesneg fel pynciau dewisiol	An equal offer of subject through the medium of Welsh and English as option subjects
CA5	KS5
Amrywiaeth o bynciau Lefel A trwy gyfrwng y ddwy iaith gan gynnwys y Fagloriaeth	A range of A Level subjects through the medium of both languages including the Welsh Baccalaureate.

# Cynnydd ac Aseu

## Aseu, Marcio ac Adrodd

- ▶ Yn Ysgol Brynhyfryd rydym yn hyrwyddo aseu mewn amrywiaeth o ffyrdd gyda ffocws clir ar y pwrpas ar bob lefel.
- ▶ Dylai aseu fod yn rhan annatod o ddysgu, nid eistedd ar wahân, a dylai fod yn dasgau cyfoethog bob dydd y mae disgyblion yn eu cwblhau, er y credwn fod lle i brofion ffurfiol mewn aseu i sicrhau bod disgyblion yn datblygu sgiliau adolygu a fydd yn rhan annatod o TGAU.
- ▶ Cefnogi disgyblion unigol yn barhaus, o dydd-i-ddydd.
- ▶ Adnabod, dal a myfyrio ar gynnydd disgybl unigol dros amser
- ▶ Deall cynnydd grŵp er mwyn myfyrio ar arfer
- ▶ Bydd y wybodaeth yma yn cael ei ddefnyddio i helpu disgyblion i wneud cynnydd pellach, i adrodd i rieni ac i fonitro cynnydd disgyblion wrth iddynt deithio drwy'r cwricwlwm.

# Progress and Assessment

## Assessment, Marking and Reporting

- ▶ At Ysgol Brynhyfryd we promote assessment in a variety of ways with a clear focus on the purpose at every level.
- ▶ Assessment should be integral to learning, not sit separately, and should be everyday rich tasks which pupils complete, although we believe that formal tests have a place in assessment to ensure pupils develop revision skills which will be integral to GCSE.
- ▶ Supporting individual pupils on an on-going, day to day basis.
- ▶ Identifying, capturing and reflecting on individual pupil progress over time
- ▶ Understanding group progress in order to reflect on practice
- ▶ This information will be used to help students make more progress, report to parents and for the school to monitor the progress of students as they travel through the curriculum.



▶ **Ysgol Brynhyfryd a'i Chlwstwr Cynradd**

- ▶ Mae cynlluniau cyffrous ar y gweill i gydweithio gyda'r ysgolion cynradd o fewn y clwstwr i sicrhau bod llwybr dysgu ein disgyblion yn gydlynol ac yn adeiladu ar gynnydd blaenorol.
- ▶ Mae'r cydweithrediad yn 2023 -2024 yn canolbwyntio ar Feysydd Dysgu a Phrofiad Ieithoedd, Llenyddiaeth a Chyfathrebu, Mathemateg a Rhifedd a Gwyddoniaeth a Thechnoleg

▶ **Ysgol Brynhyfryd and its Cluster Primaries**

- ▶ Exciting plans are underway to collaborate with the primary schools within the cluster to ensure that our pupils' learning path is coherent and builds on previous progress.
- ▶ The collaboration in 2023 -2024 focuses on the Languages, Literature and Communication, Mathematics and Numeracy and Science and Technology Areas of Learning and Experience.

# Rhanddeiliaid Stakeholders

- ▶ Llywodraethwyr
- ▶ Athrawon
- ▶ Rhieni
- ▶ Yr ardal leol
- ▶ Ysgolion y Clwstwr
- ▶ Governors
- ▶ Teachers
- ▶ Parents
- ▶ The local area
- ▶ Cluster Schools

